

# Gender & Eye Health



# Gender and Eye Health

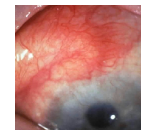
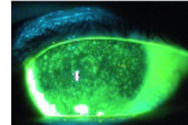
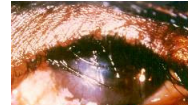


- Gender differences in eye disease
- Gender differences in blindness
  - Prevalence studies
  - Blind school studies
- Gender differences in uptake of services
  - CBR programs
  - Medical services
  - Education & rehabilitation
- Gender and eye service providers

## Gender Differences in Disease



- Trachoma
- Dry eye
- Thyroid eye disease
- Auto immune eye disease



## Gender Differences in Prevalence - Studies



- APEDS -60% were female (5 of 2861 children)
- RESC -85.7% were female (7 of 4074 )

– *Br J Ophthalmol.* 2003 March; 87(3): 263–265. Childhood blindness in India: A population based perspective R Dandona and L Dandona

## Gender Differences in Prevalence - Studies



- ***Childhood blindness in a rural population of southern India: prevalence and etiology*** : *Ophthalmic Epidemiol.* 2008 May-Jun;15(3):176-82.

## Gender Differences - Blind School Studies



- 58.9 % ( 152 out of 258) were males
  - 41.1 % (106 out of 258) were females.
- **Causes of childhood blindness in the northeastern states of India** *Indian J Ophthalmol.* 2008 Nov–Dec; 56(6): 495–499.

## Gender Differences - Blind School Studies



- 61.5% (400/733) were males
  - Causes and temporal trends of blindness and severe visual impairment in children in schools for the blind in North India J S Titiyal, N Pal, G V S Murthy, S K Gupta, R Tandon, R B Vajpayee, and C E Gilbert

## Gender Differences - Blind School Studies



- **Childhood blindness in a rural population of southern India: prevalence and etiology :**  
*Ophthalmic Epidemiol. 2008 May-Jun;15(3):176-82.*
- **Changing pattern of childhood blindness in Maharashtra, India *Br J Ophthalmol* 2007;91:8-12 doi:10.1136/bjo.2006.094433**
  - [P Gogate](#), [M Deshpande](#), [S Sudrik](#), [S Taras](#),  
[H Kishore](#), [C Gilbert](#)

# Gender Disparity?



|      | No. of Cataract Surgeries |         |         |
|------|---------------------------|---------|---------|
| Year | SARO(N)                   | SARO(S) | Total   |
| 2004 | 57,920                    | 132,879 | 190,799 |
| 2005 | 66,992                    | 144,572 | 211,564 |
| 2006 | 80,523                    | 150,604 | 231,127 |
| 2007 | 88,163                    | 157,902 | 246,065 |
| 2008 | 82,635                    | 160,310 | 242,945 |

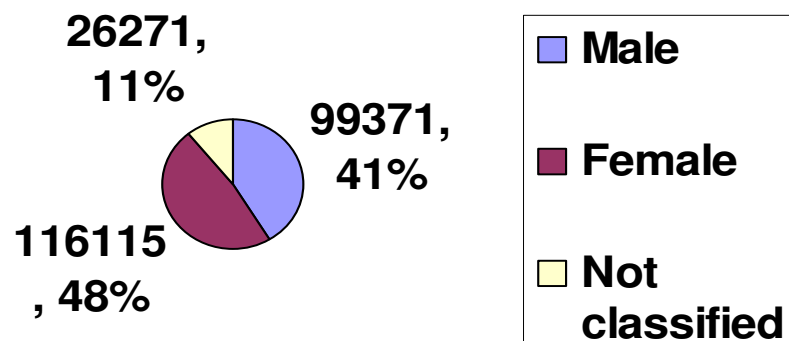
## Gender Differences – Uptake of Services Cataract surgery -Adults



| Male           | Female          |
|----------------|-----------------|
| 99371<br>(41%) | 116115<br>(48%) |



## Gender Differences – Uptake of Services



# Gender Differences – Uptake of Services Children



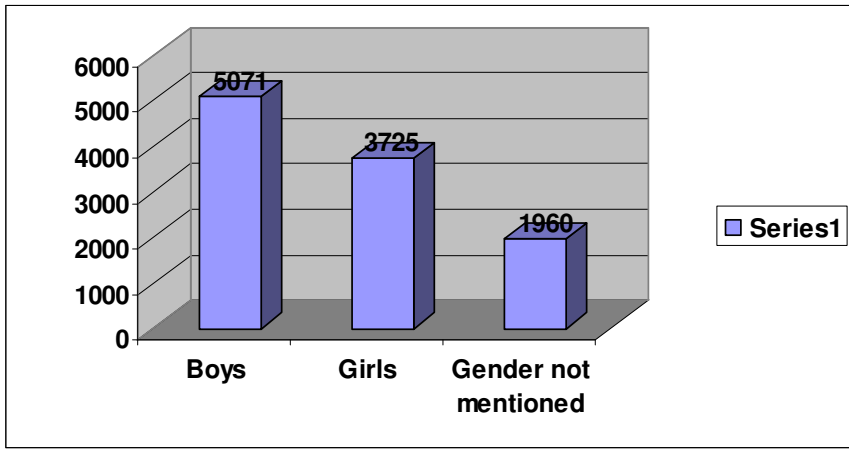
| Male         | Female       |
|--------------|--------------|
| 821<br>(69%) | 346<br>(31%) |



# Gender Differences – Education & Rehabilitation



## Gender Differences – Education & Rehabilitation **cbm** together we can do more



## Gender Differences – Education & Rehabilitation **cbm** together we can do more



|                             |             |            |
|-----------------------------|-------------|------------|
| <b>Boys</b>                 | <b>5071</b> | <b>47%</b> |
| <b>Girls</b>                | <b>3725</b> | <b>35%</b> |
| <b>Gender not mentioned</b> | <b>1960</b> | <b>18%</b> |

## Gender Differences – CBR programs



## Gender Differences – CBR programs



|                 | Male         | Female       | Total        |
|-----------------|--------------|--------------|--------------|
| <b>Adults</b>   | <b>48228</b> | <b>50553</b> | <b>98781</b> |
|                 | <b>49%</b>   | <b>51%</b>   |              |
| <b>Children</b> | <b>9827</b>  | <b>10525</b> | <b>20352</b> |
|                 | <b>48%</b>   | <b>52%</b>   |              |

## Gender Differences- Summary



- Adult women receiving cataract surgery
- Girls with cataract less likely to have surgery than boys
- Blind girls less likely to be educated
- Community based programs likely to find more blind women

## Gender Differences – Service providers



| <b>Trainees</b>    | <b>Females</b>   | <b>Males</b>     |
|--------------------|------------------|------------------|
| <b>Medical</b>     | <b>21 (40%)</b>  | <b>37 (60%)</b>  |
| <b>Paramedical</b> | <b>26 (33%)</b>  | <b>52 (67%)</b>  |
| <b>Short term</b>  | <b>108 (47%)</b> | <b>120 (53%)</b> |

**SAVE THE GIRL CHILD**

